

# True North

STRUCTURAL SYSTEMS



[www.truenorthstructural.com](http://www.truenorthstructural.com)

## PLASTIC SPACERS



Page 8



Page 8



Page 8



Page 9



Page 9



Page 9



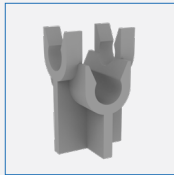
Page 9



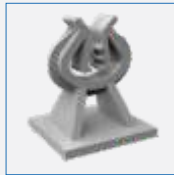
Page 10



Page 10



Page 10



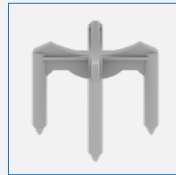
Page 10



Page 11



Page 11



Page 11



Page 12



Page 12



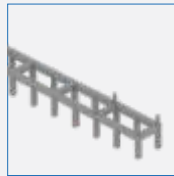
Page 12



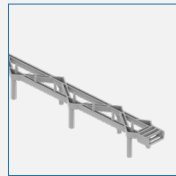
Page 13



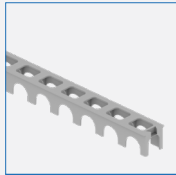
Page 13



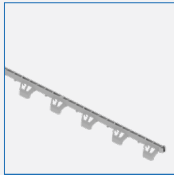
Page 13



Page 14



Page 15



Page 15

## PLASTIC FORMWORK ACCESSORIES



Page 18



Page 18



Page 18



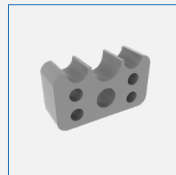
Page 18



Page 19



Page 19



Page 19



Page 19



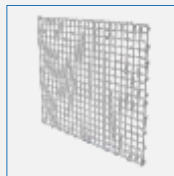
Page 19



Page 20



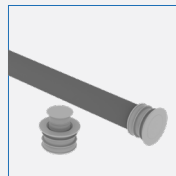
Page 20



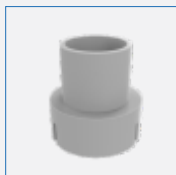
Page 20



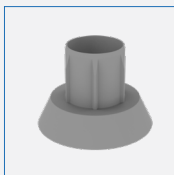
Page 21



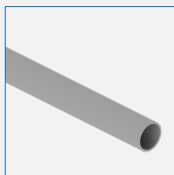
Page 21



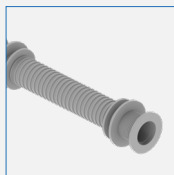
Page 21



Page 21



Page 22



Page 22



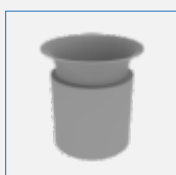
Page 22



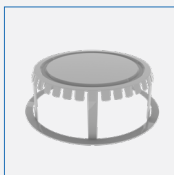
Page 23



Page 23



Page 23

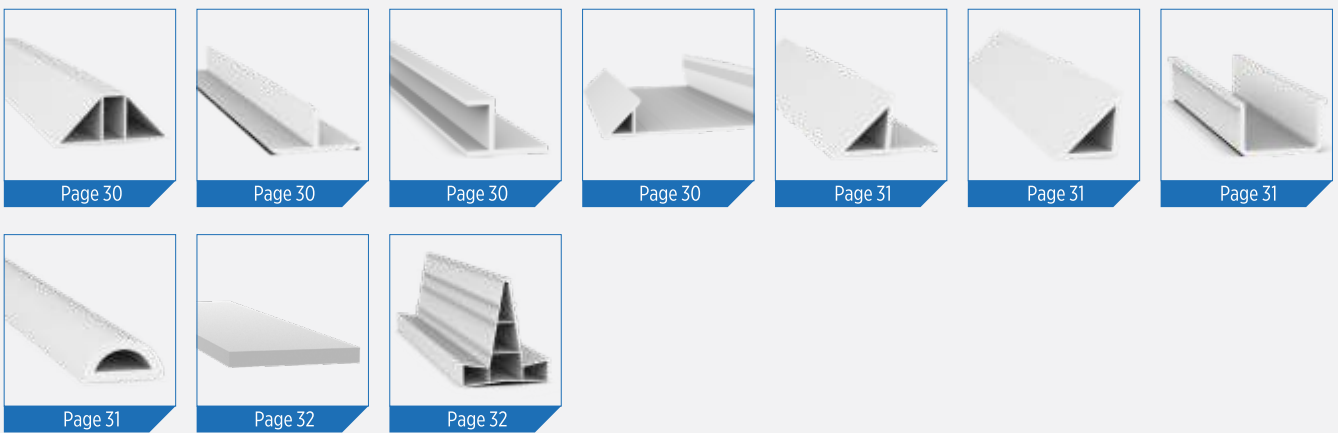


Page 23

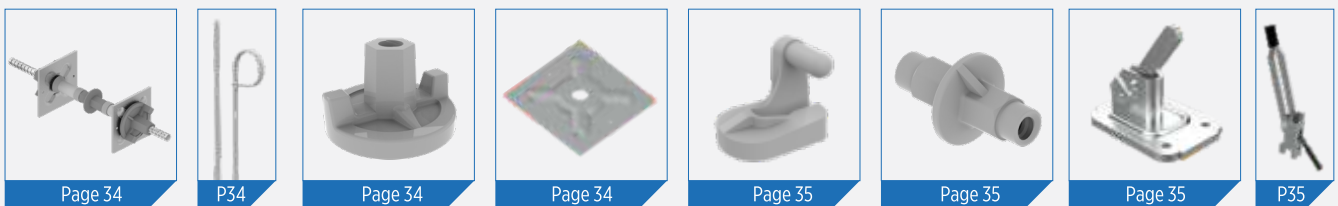
## PLASTIC PLUGS AND CAPS



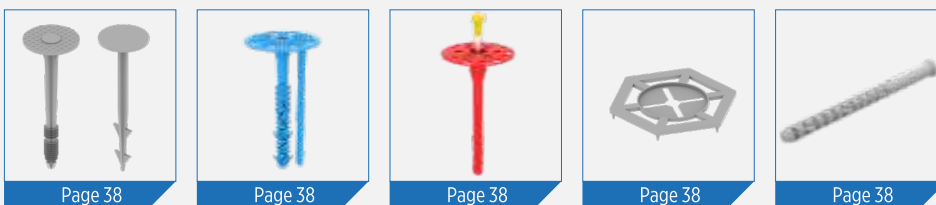
## PVC PROFILES



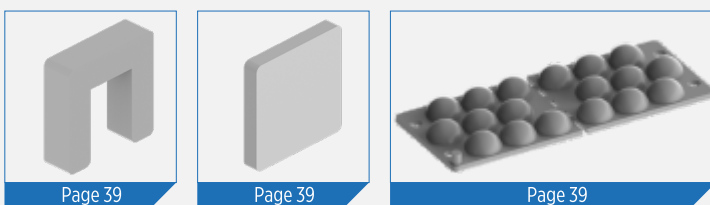
## METAL FORMWORK ACCESSORIES



## INSULATION DOWELS



## SHIMPAD



## FORMWORK OIL



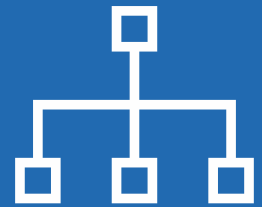
We clean  
**4,000 tons plastic waste**  
from nature with our annual production  
capacity every year.



We consume 80% recycled raw material for our production.  
The recycled raw materials used in our production and plastic waste collected from nature are transformed into products. These products are left in concrete for their use. Thus, its release to nature is prevented.  
With our annual production capacity, approximately 4,000 tons of plastic waste is cleaned from nature every year.



# PLASTIC SPACERS



**True North**  
STRUCTURAL SYSTEMS

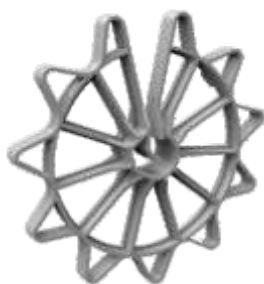


WHEELPAS is used for vertical reinforcement.  
It has a big bar diameters range and ensures good concrete flow.



**WHEELPAS**

CODE	REFERENCE	CONCRETE COVER (mm)	FOR BAR Ø (mm)	PACKAGE	
				QTY	UNIT
0010100408	10/ 04-08	10	04-08	5.000	Piece
0010101014	10/ 10-14	10	10-14	4.000	Piece
0010150408	15/ 04-08	15	04-08	5.000	Piece
0010150612	15/ 06-12	15	06-12	2.500	Piece
0010170612	17/ 06-12	17	06-12	2.500	Piece
0010171418	17/ 14-18	17	14-18	2.000	Piece
0010172026	17/ 20-26	17	20-26	1.500	Piece
0010200612	20/ 06-12	20	06-12	2.500	Piece
0010250612	25/ 06-12	25	06-12	2.000	Piece
0010251418	25/ 14-18	25	14-18	1.500	Piece
0010300812	30/ 08-12	30	08-12	1.000	Piece
0010301420	30/ 14-20	30	14-20	1.000	Piece
0010350812	35/ 08-12	35	80-12	1.000	Piece
0010401216	40/ 12-16	40	12-16	500	Piece
0010500816	50/ 08-16	50	08-16	350	Piece
0010501832	50/ 18-32	50	18-32	350	Piece
0010600816	60/ 08-16	60	08-16	250	Piece
0010750816	75/ 08-16	75	08-16	200	Piece
0010752026	75/ 20-26	75	20-26	150	Piece
0010900816	90/ 08-16	90	08-16	100	Piece



**STAR WHEELPAS**

CODE	REFERENCE	CONCRETE COVER (mm)	FOR BAR Ø (mm)	PACKAGE	
				QTY	UNIT
0020200410	20/ 04-10	20	04-10	2.500	Piece
0020250412	25/ 04-12	25	04-12	2.000	Piece
0020300412	30/ 04-12	30	04-12	1.000	Piece
0020400616	40/ 06-16	40	06-16	500	Piece
0020450616	45/ 06-16	45	06-16	500	Piece
0020500616	50/ 06-16	50	06-16	350	Piece

PILEPAS designed especially for reinforcement cages for pile foundation in closed and open (with clip) design. Supports lowering of the reinforcement cage and ensures correct concrete cover.



TYPE 1



TYPE 2



TYPE 3



TYPE 4

**PILEPAS**

CODE	REFERENCE	CONCRETE COVER (mm)	FOR BAR Ø (mm)	TYPE	PACKAGE	
					QTY	UNIT
0100400816	40/ 08-16	40	08-16	1	150	Piece
0100500812	50/ 08-12	50	08-12	1	150	Piece
0100500816	50/ 08-16	50	08-16	1	150	Piece
0100750016	75/ 16	75	16	4	100	Piece
0100750812	75/ 08-12	75	08-12	2	100	Piece
0100750816	75/ 08-16	75	08-16	2	100	Piece
0110750816	75/ 08-16	75	08-16	3	100	Piece
0100860020	86/ 20	86	20	4	50	Piece
0101000020	100/ 20	100	20	4	30	Piece
0101000812	100/ 08-12	100	08-12	2	50	Piece
0101000816	100/ 08-16	100	08-16	2	50	Piece
0101001620	100/ 16-20	100	16-20	2	50	Piece
0101251216	125/ 12-16	125	12-16	2	45	Piece

## PREPAS

CODE	REFERENCE	CONCRETE COVER (mm)	FOR BAR Ø (mm)	TYPE	PACKAGE	
					QTY	UNIT
0150060002	06/ 02	06	2	1	10.000	Piece
0150750003	7.5/ 03	7.5	3	1	10.000	Piece
0150090006	09/ 06	09	6	1	5.000	Piece
0150150006	15/ 06	15	6	2	5.000	Piece
0150150008	15/ 8.5	15	8.5	3	5.000	Piece

PREPAS for light-duty applications. Perfectly suitable for precast concrete parts.



TYPE 1



TYPE 2



TYPE 3

## CONSPAS

CODE	REFERENCE	CONCRETE COVER (mm)	FOR BAR Ø (mm)	PACKAGE	
				QTY	UNIT
0200250618	25/ 06 - 18	25	06-18	2.500	Piece
0200300618	30/ 06 - 18	30	06-18	1.500	Piece
0200400622	40/ 06 - 22	40	06-22	700	Piece

It used for vertical and horizontal reinforcement. Widened supporting surface and footing increase load-bearing capacity and prevent tilting.



## HOKPAS

CODE	REFERENCE	CONCRETE COVER (mm)	FOR BAR Ø (mm)	PACKAGE	
				QTY	UNIT
0250250008	Kancali 25	25	08	1.500	Piece
0250300008	Kancali 30	30	08	1.500	Piece
0250350008	Kancali 35	35	08	1.500	Piece
0250500008	Kancali 50	50	08	1.500	Piece



## CHAIRPAS

CODE	REFERENCE	CONCRETE COVER (mm)	FOR BAR Ø (mm)	TYPE	PACKAGE	
					QTY	UNIT
0300120410	12/ 04-10	12	04-10	1	4.000	Piece
0300150410	15/ 04-10	15	04-10	3	5.000	Piece
0300150612	15/ 06-12	15	06-12	1	3.000	Piece
0300200410	20/ 04-10	20	04-10	3	4.500	Piece
0300200618	20/ 06-18	20	06-18	1	2.500	Piece
0300250618	25/ 06-18	25	06-18	1	2.500	Piece
0300300416	30/ 04-16	30	04-16	1	2.500	Piece
0300300816	30/ 08-16	30	08-16	2	1.000	Piece
0300301632	30/ 16-32	30	16-32	1	1.000	Piece
0300350416	35/ 04-16	35	04-16	1	2.000	Piece
0300351632	35/ 16-32	35	16-32	1	1.000	Piece
0300400616	40/ 06-16	40	06-16	1	2.000	Piece
0300400816	40/ 08-16	40	08-16	2	1.000	Piece
0300450616	45/ 06-16	45	06-16	1	2.000	Piece
0300500616	50/ 06-16	50	06-16	1	1.500	Piece
0300501832	50/ 18-32	50	18-32	1	700	Piece
0300600616	60/ 06-16	60	06-16	1	750	Piece
0300751020	75/ 10-20	75	10-20	1	500	Piece

Stable spacer with large clamping range.



TYPE 1



TYPE 2



TYPE 3

It is preferred when it needs a small cover in the usage of horizontal side of the formwork.



### CLOSE MOONPAS

CODE	REFERENCE	CONCRETE COVER (mm)	FOR BAR Ø (mm)	PACKAGE	
				QTY	UNIT
0350151218	15/ 12-18	15	12-18	3.000	Piece
0350201418	20/ 14-18	20	14-18	3.000	Piece

It is used for horizontal reinforcement with a large bar seat.



### OPEN MOONPAS

CODE	REFERENCE	CONCRETE COVER (mm)	FOR BAR Ø (mm)	PACKAGE	
				QTY	UNIT
0400200820	20/ 08-20	20	08-20	2.500	Piece
0400250820	25/ 08-20	25	08-20	2.500	Piece
0400300820	30/ 08-20	30	08-20	2.500	Piece

PLUSPAS has a special design for rebar mesh systems.



TYPE 1

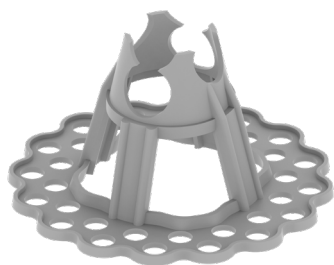


TYPE 2

### PLUSPAS

CODE	REFERENCE	CONCRETE COVER (mm)	FOR BAR Ø (mm)	TYPE	PACKAGE	
					QTY	UNIT
0450130610	13/ 06-10	06-10	13	2	2.000	Piece
0450200610	20/ 06-10	06-10	20	2	2.000	Piece
0450401010	40/ 10-10	10	40	1	1.500	Piece

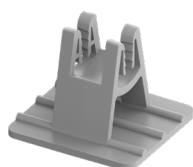
FLATPAS used on subbases, soft ground and subsoil and above of insulation.



TYPE 2



TYPE 1



TYPE 3

### FLATPAS

CODE	REFERENCE	CONCRETE COVER (mm)	FOR BAR Ø (mm)	STAND DIM. (mm)	TYPE	PACKAGE	
						QTY	UNIT
0500150408	15/ 04-08	15	04 - 08	35x37	3	2.500	Piece
0500150510	15/ 05-10	15	05 - 10	30x35	1	2.500	Piece
0500200614	20/ 06-14	20	06 - 14	32x34	1	1.500	Piece
0500250618	25/ 06-18	25	06 - 18	32x34	1	1.500	Piece
0500350614	35/ 06-14	35	06 - 14	50x50	1	1.000	Piece
0501520616	15/ 20	15/ 20	06 - 16	103	2	500	Piece
0502530616	25/ 30	25/ 30	06 - 16	116	2	400	Piece
0504050616	40/ 50	40/ 50	06 - 16	123	2	200	Piece
0505060616	50/ 60	50/ 60	06 - 16	127	2	200	Piece
0506070616	60/ 70	60/ 70	06 - 16	134	2	200	Piece
0507080616	70/ 80	70/ 80	06 - 16	140	2	200	Piece
0509010616	90/100	90/100	06 - 16	154	2	100	Piece



## TABLEPAS

CODE	REFERENCE	CONCRETE COVER (mm)	FOR BAR Ø (mm)	TYPE	PACKAGE	
					QTY	UNIT
0550150612	15/ 06-12	15	06-12	2	1.000	Piece
0550200612	20/ 06-12	20	06-12	2	1.000	Piece
0550250612	25/ 06-12	25	06-12	2	1.000	Piece
0550250618	25/ 06-18	25	06-18	1	1.500	Piece
0550300612	30/ 06-12	30	06-12	2	500	Piece
0550350612	35/ 06-12	35	06-12	2	500	Piece
0550400612	40/ 06-12	40	06-12	2	500	Piece
0550450612	45/ 06-12	45	06-12	2	500	Piece
0550500612	50/ 06-12	50	06-12	2	500	Piece

It makes minor contact with formwork. It gives good result for aggregate and textured concrete.



TYPE 1

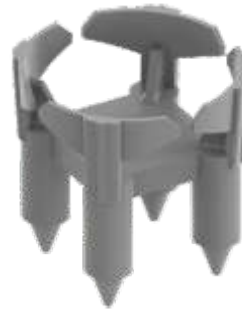


TYPE 2

## BUCKETPAS

CODE	REFERENCE	CONCRETE COVER (mm)	FOR BAR Ø (mm)	TYPE	PACKAGE	
					QTY	UNIT
0600150620	15/ 06-20	15	06-20	1	1.000	Piece
0600200620	20/ 06-20	20	06-20	1	1.000	Piece
0600250620	25/ 06-20	25	06-20	1	900	Piece
0600300620	30/ 06-20	30	06-20	1	750	Piece
0600350620	35/ 06-20	35	06-20	1	750	Piece
0600400620	40/ 06-20	40	06-20	1	500	Piece
0600500620	50/ 06-20	50	06-20	1	500	Piece
0612025816	10/15/20/25	10/15/20/25	08-16	2	1.000	Piece

Punctiform legs for minor contact with formwork. Sturdy design spacer for upper reinforcement layer with large clamping range.



TYPE 1

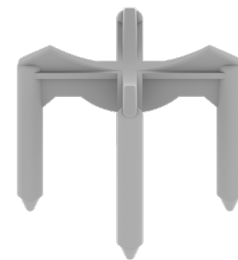


TYPE 2

## CROSS CHAIR

CODE	REFERENCE	CONCRETE COVER (mm-inc)	FOR BAR Ø (mm)	PACKAGE	
				QTY	UNIT
0620200620	20/ 06-20	20- 3/4"	06-20	1.000	Piece
0620250620	25/ 06-20	25- 1"	06-20	1.000	Piece
0620300620	30/ 06-20	30- 1 1/4"	06-20	1.000	Piece
0620350620	35/ 06-20	35- 1 3/8"	06-20	1.000	Piece
0620400620	40/ 06-20	40- 1 1/2"	06-20	1.000	Piece
0620450620	45/ 06-20	45- 1 3/4"	06-20	1.000	Piece
0650500620	50/ 06-20	50- 2"	06-20	750	Piece

Very special design with minor contact with formwork due to punctiform legs. It ensures very good concrete flow.



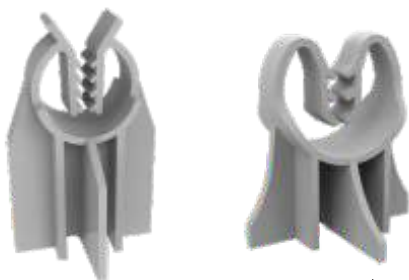
Stackable version of above spacer. It has a big height range depending on special request.



**STACKABLE CROSS CHAIR SPACER**

CODE	REFERENCE	CONCRETE COVER (mm-inc)	FOR BAR Ø (mm)	PACKAGE	
				QTY	UNIT
0630600632	60/ 06-32	60- 2 3/8"	06-32	200	Piece
0630650632	65/ 06-32	65- 2 1/2"	06-32	200	Piece
0630700632	70/ 06-32	70- 2 3/4"	06-32	200	Piece
0630750632	75/ 06-32	75- 3"	06-32	200	Piece
0630800632	80/ 06-32	80- 3 1/4"	06-32	200	Piece
0630900632	90/ 06-32	90- 3 1/2"	06-32	200	Piece
0630950632	95/ 06-32	95- 3 3/4"	06-32	280	Piece
0631000632	100/ 06-32	100- 4"	06-32	280	Piece
0631150632	115/ 06-32	115- 4 1/2"	06-32	240	Piece
0631300632	130/ 06-32	130- 5"	06-32	200	Piece
0631350632	135/ 06-32	135- 5 1/4"	06-32	200	Piece
0631400632	140/ 06-32	140- 5 1/2"	06-32	200	Piece
0631500632	150/ 06-32	150- 6"	06-32	150	Piece
0631600632	160/ 06-32	160- 6 1/4"	06-32	160	Piece
0631650632	165/ 06-32	165- 6 1/2"	06-32	160	Piece
0631800632	180/ 06-32	180- 7"	06-32	160	Piece

High durable spacer with large clamping range.

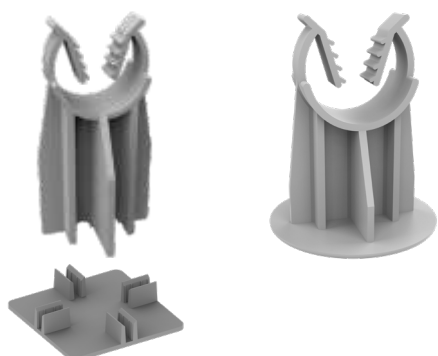


25-30-40-50/8-24

**NORMPAS**

CODE	REFERENCE	CONCRETE COVER (mm-inc)	FOR BAR Ø (mm)	PACKAGE	
				QTY	UNIT
0650200824	20/ 08-24	20	08-24	1.000	Piece
0650250824	25/ 08-24	25	08-24	1.000	Piece
0650300824	30/ 08-24	30	08-24	750	Piece
0650350824	35/ 08-24	35	08-24	700	Piece
0650400824	40/ 08-24	40	08-24	600	Piece
0650500824	50/ 08-24	50	08-24	500	Piece
0650550824	55/ 08-24	55	08-24	500	Piece
0650600824	60/ 08-24	60	08-24	500	Piece
0650650824	65/ 08-24	65	08-24	400	Piece
0650750824	75/ 08-24	75	08-24	400	Piece

High durable spacer with large clamping range. It is also available with a base stand to protect against any impact to insulation and soil ground.



**NORMPAS HD**

CODE	REFERENCE	CONCRETE COVER (mm-inc)	FOR BAR Ø (mm)	PACKAGE	
				QTY	UNIT
0660502032	50/ 20-32	50	20-32	350	Piece
0660752032	75/ 20-32	75	20-32	250	Piece
0660952032	95/ 20-32	95	20-32	200	Piece
0661002032	100/ 20-32	100	20-32	200	Piece
0660000001	Norm Stand	Stand Dim.	70x70 cm	1.000	Piece
0660502032S	50/ 20-32 with stand	50	20-32	300	Piece
0660752032S	75/ 20-32 with stand	75	20-32	250	Piece
0661002032S	100/ 20-32 with stand	100	20-32	200	Piece

## SNAPPAS

CODE	REFERENCE	CONCRETE COVER (mm)	FOR BAR Ø (mm)	PACKAGE	
				QTY	UNIT
0670150416	15/04-16	15- 1/2"	04-16	1.000	Piece
0670200416	20/04-16	20- 3/4"	04-16	1.000	Piece
0670250416	25/04-16	25- 1"	04-16	1.000	Piece
0670300416	30/04-16	30- 1 1/4"	04-16	1.000	Piece
0670350416	35/04-16	35- 1 3/8"	04-16	1.000	Piece
0670400416	40/04-16	40- 1 1/2"	04-16	1.000	Piece
0670450416	45/04-16	45- 1 3/4"	04-16	1.000	Piece
0670500416	50/04-16	50- 2"	04-16	1.000	Piece
0670600620	60/06-20	60- 2 3/8"	06-20	500	Piece
0670700620	70/06-20	70- 2 3/4"	06-20	500	Piece
0670800620	80/06-20	80- 3 1/4"	06-20	500	Piece
0670900620	90/06-20	90- 3 1/2"	06-20	500	Piece
0671000620	100/06-20	100- 4"	06-20	500	Piece



## CIRCLEPAS

CODE	REFERENCE	CONCRETE COVER (mm)	FOR BAR Ø (mm)	PACKAGE	
				QTY	UNIT
0700150150	15 x 150	15	150	500	Piece
0700200200	20 x 200	20	200	500	Piece
0700250200	25 x 200	25	200	500	Piece
0700300200	30 x 200	30	200	350	Piece
0700400200	40 x 200	40	200	300	Piece

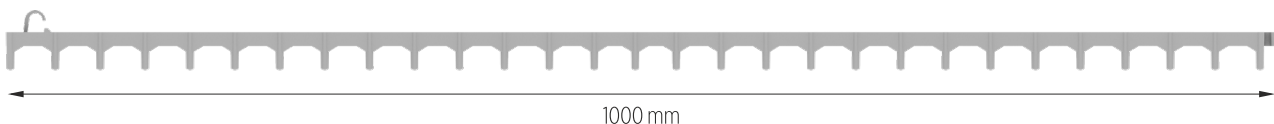
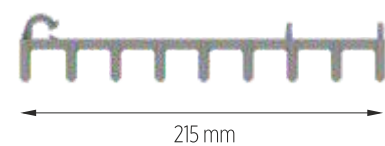
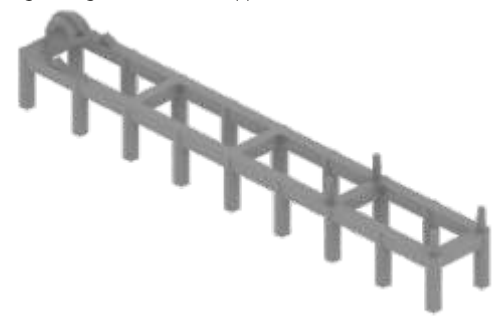
Being installed in a wider area, it provides great convenience in steel meshes. Extremely sturdy and stable design for using in production of precast concrete parts.



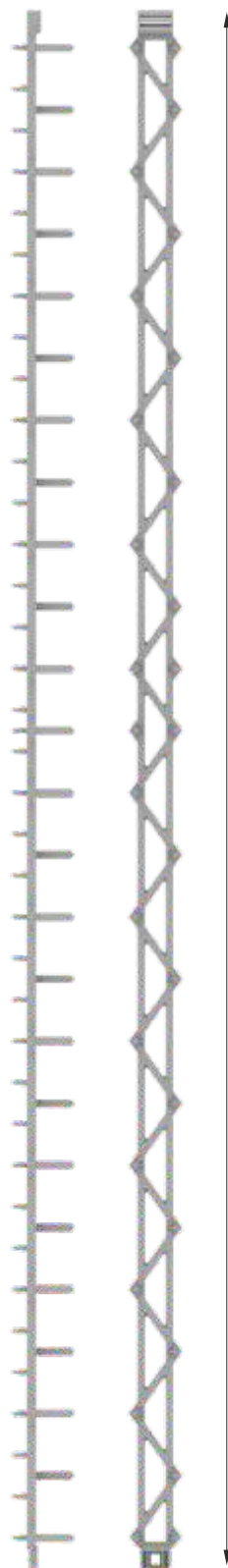
## PARAPAS

CODE	REFERENCE	CONCRETE COVER (mm)	LENGTH (mm)	PACKAGE	
				QTY	UNIT
0750215015	15 x 215	15	215	500	Piece
0750215020	20 x 215	20	215	500	Piece
0750215025	25 x 215	25	215	500	Piece
0750215030	30 x 215	30	215	350	Piece
0750215035	35 x 215	35	215	350	Piece
0750215040	40 x 215	40	215	300	Piece
0750215045	45 x 215	45	215	250	Piece
0750215050	50 x 215	50	215	200	Piece
0761000015	15 x 1000	15	1000	100	Piece
0761000020	20 x 1000	20	1000	100	Piece
0761000025	25 x 1000	25	1000	100	Piece
0761000030	30 x 1000	30	1000	100	Piece
0761000035	35 x 1000	35	1000	100	Piece
0761000040	40 x 1000	40	1000	100	Piece
0761000045	45 x 1000	45	1000	100	Piece
0761000050	50 x 1000	50	1000	100	Piece

It is applied both vertically and horizontally. They are sturdy interconnect components that can reinforce the wider area. Its falling is prevented by attaching its ledge on the vertical application to the rebar.



**TRACKPAS**



50 cm  
100 cm  
118 cm  
125 cm  
200 cm

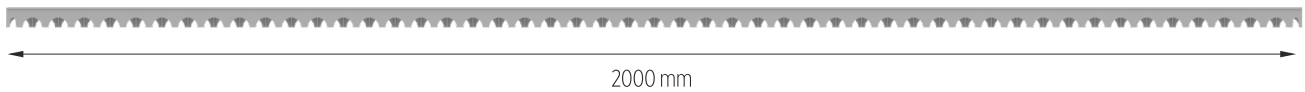
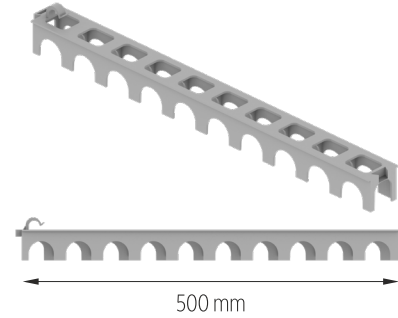
CODE	REFERENCE	CONCRETE COVER (mm)	LENGTH (mm)	PACKAGE	
				QTY	UNIT
0770500015	15x500	15	500	100	Piece
0770500020	20x500	20	500	100	Piece
0770500025	25x500	25	500	100	Piece
0770500030	30x500	30	500	100	Piece
0770500035	35x500	35	500	100	Piece
0770500040	40x500	40	500	100	Piece
0770500045	45x500	45	500	100	Piece
0770500050	50x500	50	500	100	Piece
0771000015	15x1000	15	1000	100	Piece
0771000020	20x1000	20	1000	100	Piece
0771000025	25x1000	25	1000	100	Piece
0771000030	30x1000	30	1000	100	Piece
0771000035	35x1000	35	1000	100	Piece
0771000040	40x1000	40	1000	100	Piece
0771000045	45x1000	45	1000	100	Piece
0771000050	50x1000	50	1000	100	Piece
0771180015	15x1180	15	1180	100	Piece
0771180020	20x1180	20	1180	100	Piece
0771180025	25x1180	25	1180	100	Piece
0771180030	30x1180	30	1180	100	Piece
0771180035	35x1180	35	1180	100	Piece
0771180040	40x1180	40	1180	100	Piece
0771180045	45x1180	45	1180	100	Piece
0771180050	50x1180	50	1180	100	Piece
0771250015	15x1250	15	1250	100	Piece
0771250020	20x1250	20	1250	100	Piece
0771250025	25x1250	25	1250	100	Piece
0771250030	30x1250	30	1250	100	Piece
0771250035	35x1250	35	1250	100	Piece
0771250040	40x1250	40	1250	100	Piece
0771250045	45x1250	45	1250	100	Piece
0771250050	50x1250	50	1250	100	Piece
0772000015	15x2000	15	2000	100	Piece
0772000020	20x2000	20	2000	100	Piece
0772000025	25x2000	25	2000	100	Piece
0772000030	30x2000	30	2000	100	Piece
0772000035	35x2000	35	2000	100	Piece
0772000040	40x2000	40	2000	100	Piece
0772000045	45x2000	45	2000	100	Piece
0772000050	50x2000	50	2000	100	Piece



## PROPAS

CODE	REFERENCE	CONCRETE COVER (mm)	LENGTH (mm)	PACKAGE	
				QTY	UNIT
0850250500	25 x 500	25	500	100	Piece
0850300500	30 x 500	30	500	100	Piece
0850350500	35 x 500	35	500	100	Piece
0850400500	40 x 500	40	500	100	Piece
0850500500	50 x 500	50	500	100	Piece
0860600500	60 x 500	60	500	100	Piece
0860252000	25 x 2000	25	2000	100	Piece
0860302000	30 x 2000	30	2000	100	Piece

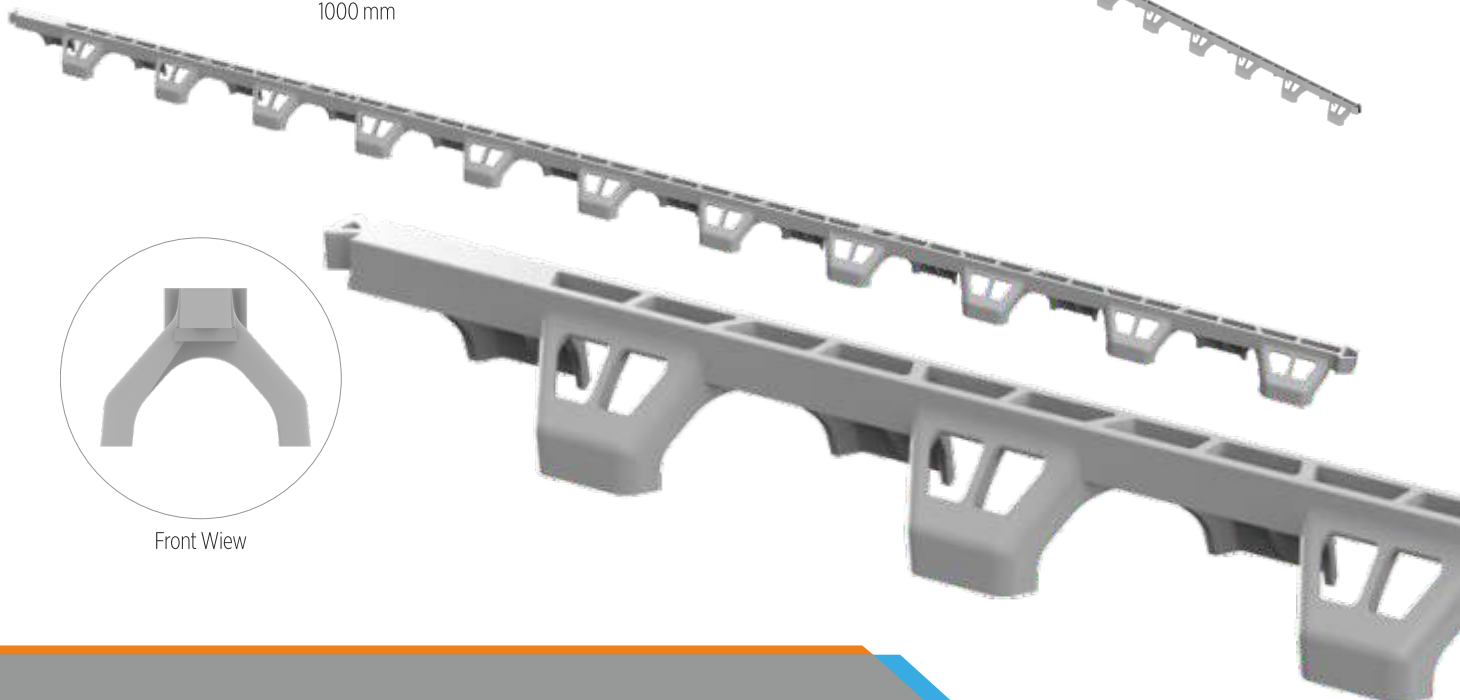
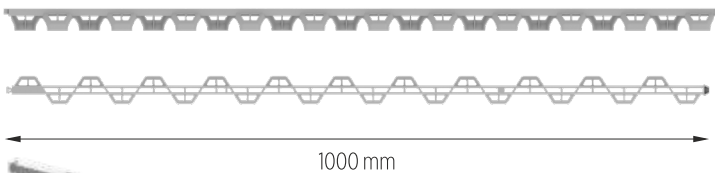
It is implemented vertically and horizontally and provides convenience in flooring. 500mm versions can be attached to each other to make them longer. Suitable for exposed concrete and prefabricated floors only under certain conditions.



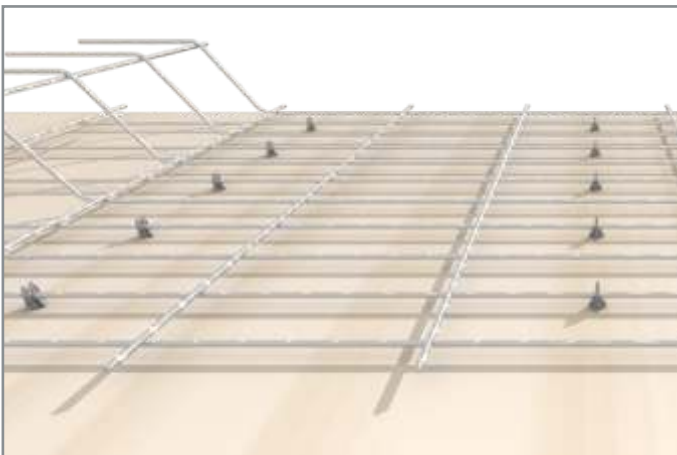
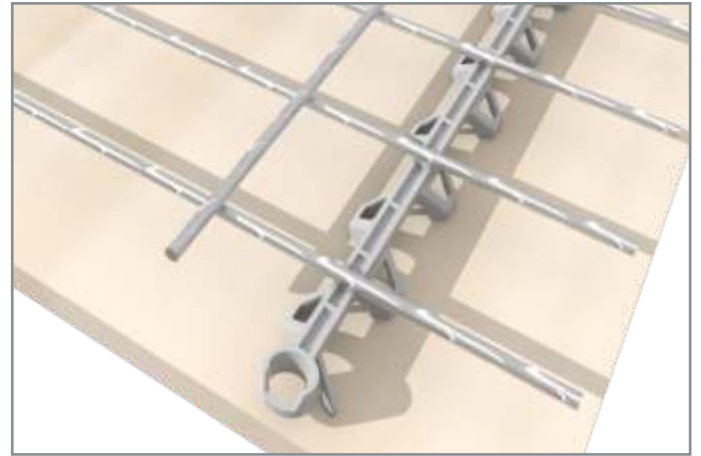
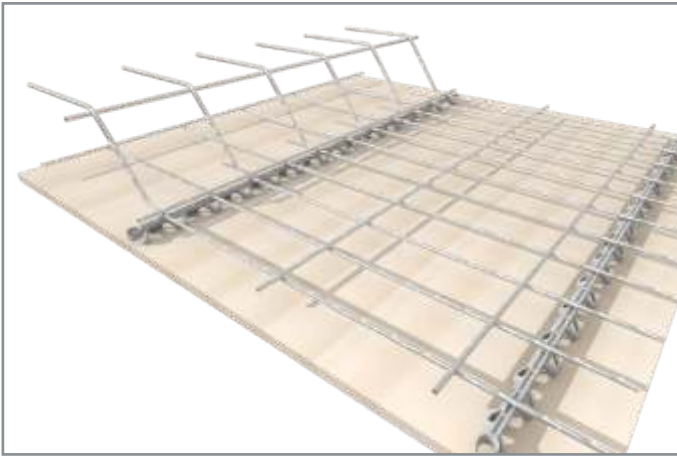
## ZZPAS

CODE	REFERENCE	CONCRETE COVER (mm)	LENGTH (mm)	PACKAGE	
				QTY	UNIT
0950251000	25 x 1000	25	1000	50	Piece
0950301000	30 x 1000	30	1000	50	Piece
0950501000	50 x 1000	50	1000	20	Piece
0950601000	60 x 1000	60	1000	20	Piece

The desired length can be obtained by attaching them to one another. Edges and gaps in its profile ensures that the cement is spread more homogeneously. It is used for the lower part of the reinforcement. The desired length can be obtained by attaching them to one another.

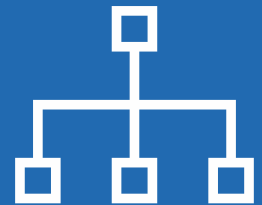


Front View

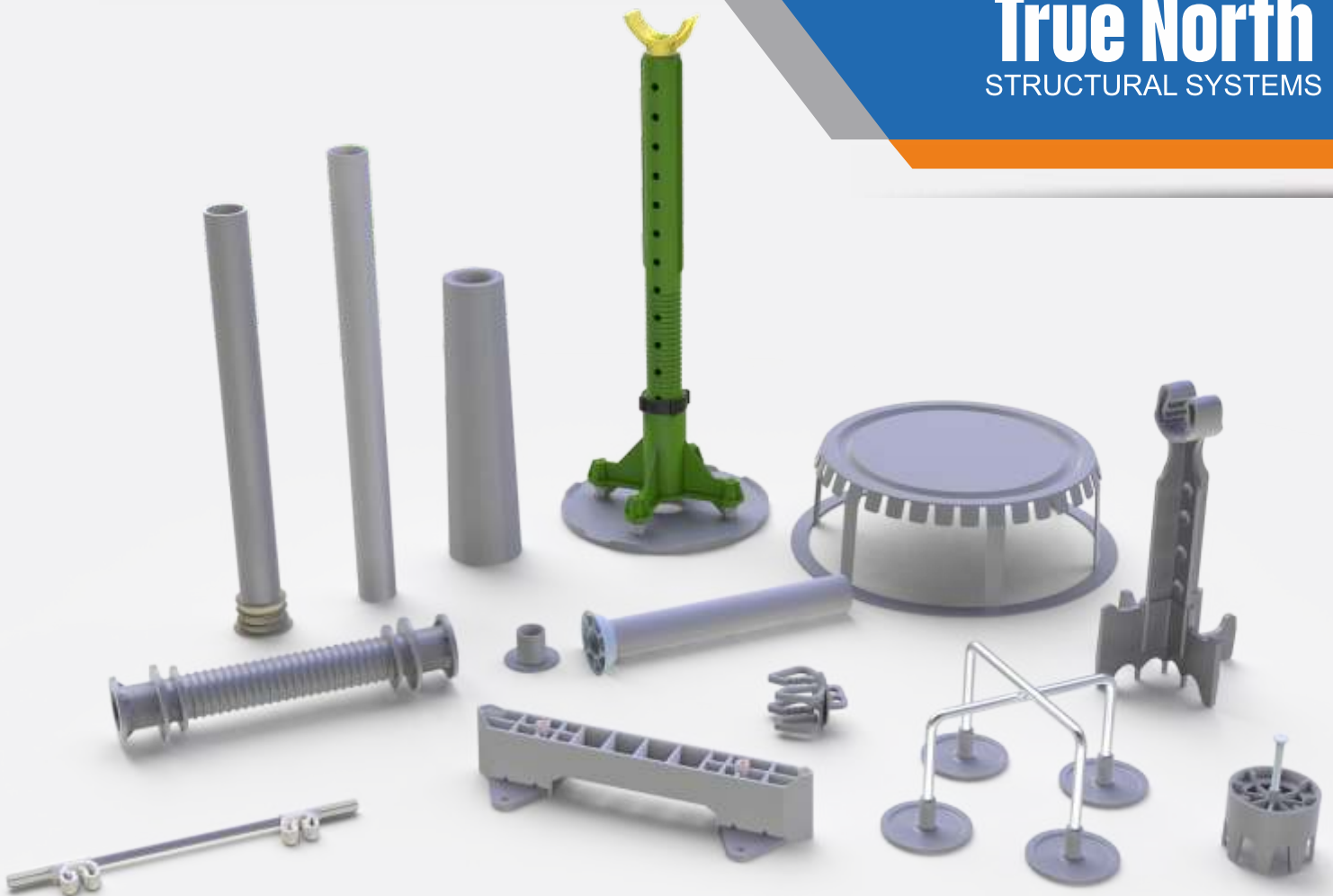




# PLASTIC FORMWORK ACCESSORIES



**True North**  
STRUCTURAL SYSTEMS





Used in the production of precast double wall.

**ROCKETPAS**

CODE	REFERENCE	CONCRETE COVER (mm)	FOR BAR Ø (mm)	PACKAGE	
				QTY	UNIT
0970000001	Rocket Type	30/25/20	10-12	1000	Piece



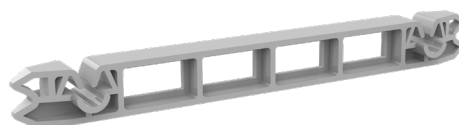
**LINKPAS**

CODE	REFERENCE	FOR BAR Ø (mm)	PACKAGE	
			QTY	UNIT
0970000001	Klips 12x12	12	5000	Piece
0970000002	Klips 12x16	12-16	5000	Piece

Stabilizes the distance of the steel meshes to one another and the thickness of the spacers in reinforced concrete molds in which two lines of steel mesh is used. Further wall thicknesses and concrete covers available on request.

**DISTAPAS**

CODE	REFERENCE	CONCRETE COVER (mm)	LENGHT (mm)	FOR BAR Ø (mm)	PACKAGE	
					QTY	UNIT
1010200200	Plastic	20	200	08-10	500	Piece
1020250200	Metal	20/25/30/40	Intended Size	08-10	-	Piece



It is used for stabilizing the upper formwork in mushroom slab paving. Plastic covers attached to its legs prevents the metal from getting rusty and sinking. The upper formwork is placed on top of it.

**QUATROPAS**

CODE	REFERENCE	CONCRETE COVER (mm)	STAND DIMENSION (mm)	PACKAGE	
				QTY	UNIT
1010200200	Mushroom Slab	Intended Height	Intended Size	-	Piece





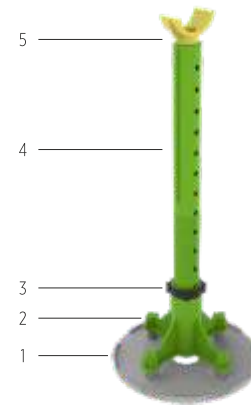
## DOUBLEPAS

CODE	REFERENCE	CONCRETE COVER (mm)	PACKAGE	
			QTY	UNIT
1060000230	230 Top Reinforcement	230	400	Piece
1060000280	280 Top Reinforcement	280	300	Piece
10600002550	25-30-40-50 Base Reinforcement	25-30-40-50	1.000	Piece



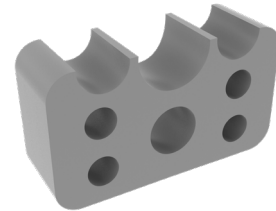
## SETTLEPAS

CODE	REFERENCE	PRODUCT DESCRIPTION	PACKAGE	
			QTY	UNIT
1070150230	150-230	Height-adjusted Body 150-230mm	250	Piece
1070231310	231-310	Height-adjusted Body 231-310mm	250	Piece
1070311390	311-390	Height-adjusted Body 311-390mm	250	Piece
1070500000	Quarted Support	Quarted Support	250	Piece
1070501000	Moving Head	Moving Head	1.000	Piece
1070502000	Fixing Nut	Fixing Nut	1.000	Piece
1070503150	Extra Base	Extra Base Ø150mm	250	Piece



## BUCKETPAS

CODE	REFERENCE	CONCRETE COVER (mm)	FOR BAR Ø (mm)	PACKAGE	
				QTY	UNIT
9900002015	20/15 Bucket Spacer	20/15	08-16	1000	Piece



## CAPPAS

CODE	REFERENCE	CONCRETE COVER (mm)	FOR BAR Ø (mm)	PACKAGE	
				QTY	UNIT
1090000408	Cappas	15/55	04-08	2000	Piece
1090000812	Cappas	15/55	08-12	2000	Piece
1090001216	Cappas	15/55	12-16	2000	Piece

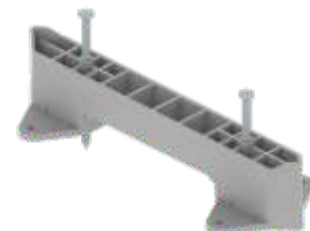
It is used to terminate the mesh reinforcements in precast concrete molds. Spacers are produced in different lengths between 15-55 mm.



## TALONETPAS

CODE	REFERENCE	LENGHT (cm)	PACKAGE	
			QTY	UNIT
1100000016	16 cm. Talonet	16	100	Piece
1100000018	18 cm. Talonet	18	100	Piece
1100000020	20 cm. Talonet	20	100	Piece
1100000025	25 cm. Talonet	25	100	Piece

It is assembled to appropriate places in the ground in the installation of the concrete walls and during the levelling process. It is used between wall forms to ensure the measurements. When used beneath the foundations it sets the limits and at the same time acts as a spacer.



It is assembled to appropriate places in the ground in the installation of the steel formworks and during the leveling process. It is used for keeping the formworks together and stabilizing them.



**TALONETPAS R**

CODE	REFERENCE	HEIGHT-DIA.	PACKAGE	
			QTY	UNIT
1110000030	h:30-Ø48mm	h:30-Ø48mm	500	Piece

They are plastic molds used for the concrete spacer production. They can be produced in different size and types according to the project.



TYPE 1

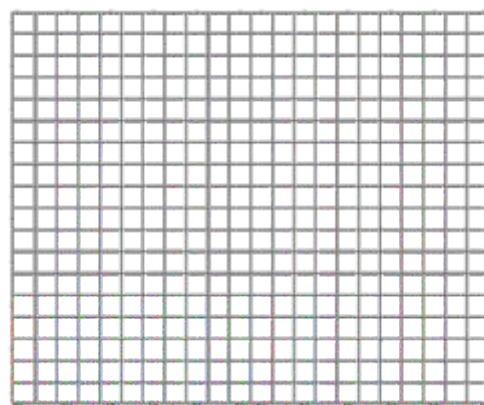
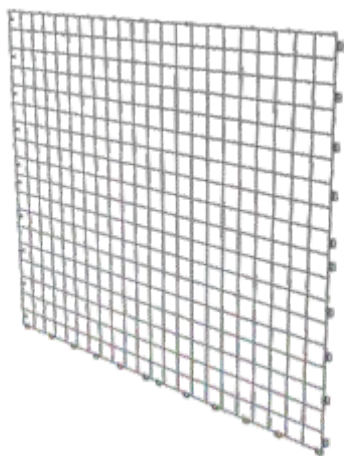


TYPE 2

**MOLD FOR CASTING CONCRETE**

CODE	REFERENCE	CONCRETE COVER (mm)	TYPE	PACKAGE	
				QTY	UNIT
1120000001	50mm	50	1	100	Piece
1120000002	75mm	75	1	100	Piece
1120000003	80mm	80	2	100	Piece
1120000030	Concrete Spacer Cap	Rebar Dia. 08-16 mm.	-	1.500	Piece

It is the plastic mesh that is placed on the steel tube to which concrete pavement is going to be applied. Its size is 1.000 mm x 1.224 mm and has 50 mm x 50 mm mesh intervals, with 5 mm thick vertical and horizontal connection bars. It can also be used in different kinds of implementations.



**PLASTIC MESH**

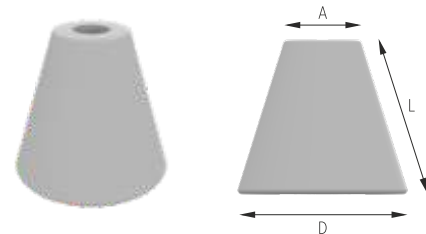
CODE	REFERENCE	DIMENSIONS	PACKAGE	
			QTY	UNIT
1150000001	Plastic Mesh	5x1000x1224mm	1	Piece



## REBAR HUB TO BE LEFT IN CONCRETE

CODE	REFERENCE	A (mm)	L (mm)	D (mm)	PACKAGE	
					QTY	UNIT
1200080040	8 x 40	08	40	50	1.000	Piece
1200100040	10 x 40	10	40	50	1.000	Piece
1200120030	12 x 30	12	30	50	1.000	Piece
1200120040	12 x 40	12	40	50	1.000	Piece
1200140040	14 x 40	14	40	50	1.000	Piece

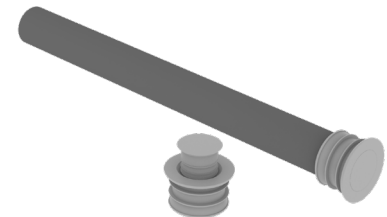
It is implemented in reinforced concrete wall molds in a way that it will be in contact with both the structural iron and the formwork. It is tightened with formed spring clamp and removed from the concrete when the concrete is poured and the mold is obtained.



## TIE ROD TAP

CODE	REFERENCE	HOLE DIA Ø (mm)	HOLE OUTER DIA Ø (mm)	PACKAGE	
				QTY	UNIT
1300252025	25mm Stopper Cap	20	25	2.000	Piece
1300322832	32mm Stopper Cap	28	32	1.000	Piece

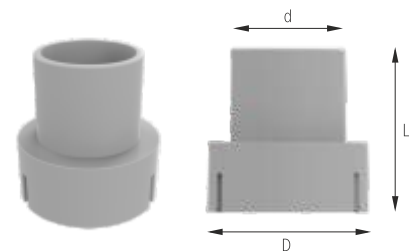
It is the cap that prevents the leakage of cement slurry into the casing pipe of the Tie-rod that is used to stabilize the distance between the reinforced concrete blade column and the beam molds. It also has a special tap that covers the gap at the end.



## WATER STOPPER CAP

CODE	REFERENCE	D (mm)	L (mm)	d (mm)	PACKAGE	
					QTY	UNIT
1350250021	Reduction	25	30	21	2.000	Piece

In reinforced concrete water structures a special type of Tie-rod is installed bilaterally in two sides of the nodular cast iron water stopper equipment, thus reinforcing the mold. Outside of the Tie-rod within the mold there is also a protective pipe. And these are the connecting parts that links the protective pipe to the water stopper equipment.



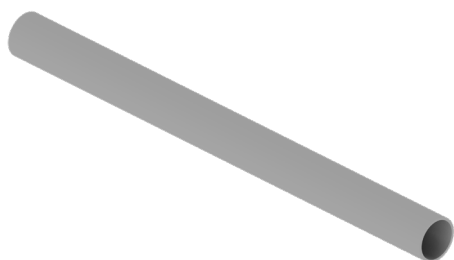
## TIE ROD CONE

CODE	REFERENCE	HOLE DIA Ø (mm)	HOLE OUTER DIA Ø (mm)	PACKAGE	
				QTY	UNIT
1450221622	18-22	18	22	3.000	Piece
1450251925	22-25	22	25	2.000	Piece
1450252225	25 (L:400)	22	25	2.000	Piece
1450302630	26-30	26	30	1.000	Piece
1450322832	28-32	28	32	1.000	Piece
1450363236	32-36	32	36	1.000	Piece
1450342020	25 (Tie Rod Cone Plug)	20	-	1.000	Piece

It is the cap that prevents the leakage of cement slurry into the casing pipe of the Tie-rod that is used to stabilize the distance between the reinforced concrete blade column and the beam molds. Like it can be covered with its special tap, it is also possible to remove and reuse them.



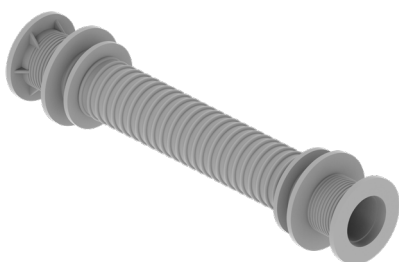
It is used for protecting and re-using the Tie-rod. It is made of PE (Polyethylene) and PVC. It can be produced as 2.0m, 2.5m or 3m long, also it has smooth and rough surfaced variations.



## TIE-ROD PIPE

CODE	REFERENCE	TUBE INNER DIA Ø (mm)	TUBE OUTER DIA Ø (mm)	PACKAGE	
				QTY	UNIT
1500221822	22mm	18	22	102	Meter
1500212224	24mm	21	24	102	Meter
1500252225	25mm	22	25	102	Meter
1500262226	26mm	22	26	102	Meter
1500272229	29mm	22	29	102	Meter
1500302630	30mm	26	30	102	Meter
1500322832	32mm	28	32	102	Meter
1500363236	36mm	32	36	102	Meter

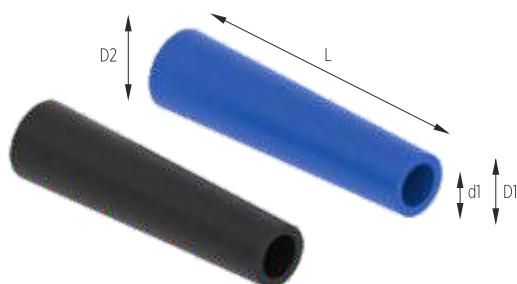
It is used as a formwork spacer made from PE (Polyethylene). It is covered with two plugs.



## DISP

CODE	REFERENCE	TUBE INNER DIA Ø (mm)	TUBE OUTER DIA Ø (mm)	L (mm)	PACKAGE	
					QTY	UNIT
1550250200	20mm	20	22	200	150	Piece

These are used for protecting the Tie-Rod and they are resistant to high pressure. Because it has a conic shape it can be removed with its special removal kit and be used multiple times. The gap that is formed when it is removed can be covered with rubber taps and special mortars.



## BLUE CONIC

CODE	REFERENCE	AVAILABLE TIE-ROD DIA Ø (mm)	D2 Ø (mm)	d1 Ø (mm)	D1 Ø (mm)	PACKAGE	
						QTY	UNIT
1603550015	150mm	17V24	50V55	20V27	35V40	100	Piece
1603550020	200mm	17V24	50V55	20V27	35V40	100	Piece
1603550025	250mm	17V24	50V55	20V27	35V40	100	Piece
1603550030	300mm	17V24	50V55	20V27	35V40	100	Piece
1603550035	350mm	17V24	50V55	20V27	35V40	100	Piece
1603550040	400mm	17V24	50V55	20V27	35V40	100	Piece
1603550045	450mm	17V24	50V55	20V27	35V40	75	Piece
1603550050	500mm	17V24	50V55	20V27	35V40	50	Piece
1603550060	600mm	17V24	50V55	20V27	35V40	50	Piece
1630240148	148mm	24	55	27	45	100	Piece
1630240158	158mm	24	55	27	45	100	Piece
1630240198	198mm	24	55	27	45	100	Piece

## LABEL NAIL

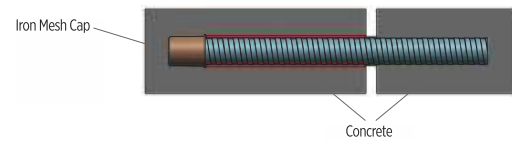
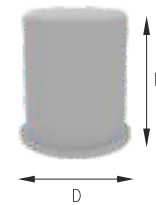
CODE	REFERENCE	L (mm)	PACKAGE	
			QTY	UNIT
1650000045	45	45 mm	5.000	Piece



## PRECAST CONNECTING REBAR CAP

CODE	REFERENCE	D Ø (mm)	H (mm)	PACKAGE	
				QTY	UNIT
1820250035	25	25	35	2.000	Piece
1820320035	32	32	35	2.000	Piece

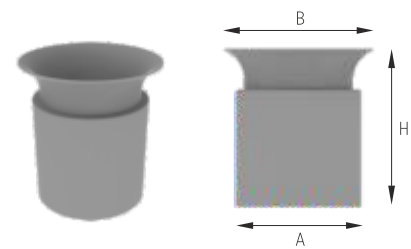
It is the protective pipe cover.



## PLUGS FOR THEAD PROTECTION

CODE	REFERENCE	A (mm)	B (mm)	H (mm)	PACKAGE	
					QTY	UNIT
2151180095	118mm	118	95	153	100	Piece
2151600143	160mm	160	143	148	50	Piece
2151700140	170mm	170	140	153	50	Piece

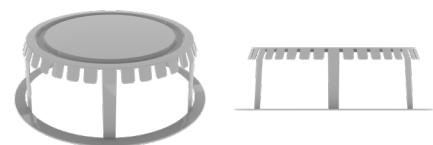
It ensures that the cables that are placed within the protective pipe does not get harmed by the pipe edge and get slid inside with comfort.



## PRECAST BLOCK CAP

CODE	REFERENCE	HOLE DIA Ø (mm)	CONCRETE THICKNESS (mm)	PACKAGE	
				QTY	UNIT
2201150200	115mm	115	200	500	Piece
2151600265	160mm	160	265	400	Piece
2151800265	180mm	180	265	400	Piece
2152000320	200mm	200	300-320	200	Piece

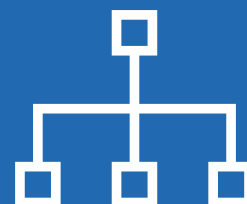
These are plastic caps used in fabricated caving components to prevent that the concrete gets filled within the gaps.







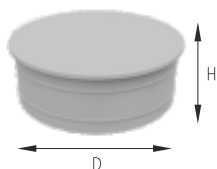
# PLASTIC PLUGS AND CAPS



**True North**  
STRUCTURAL SYSTEMS



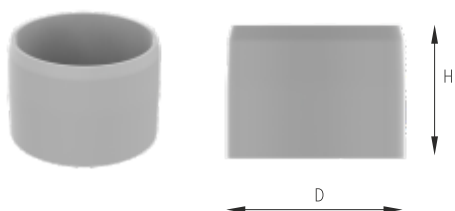
It is used for covering the bellmouth ends of the PVC pipes.



**PVC PIPE PLUG**

CODE	REFERENCE	D Ø (mm)	H (mm)	PACKAGE	
				QTY	UNIT
1800500001	50mm Bellmouthed	50	27	1.000	Piece
1800500002	50mm Non-bellmouthed	45	27	1.000	Piece
1800750001	75mm Bellmouthed	75	32	500	Piece
1800750002	75mm Non-bellmouthed	70	32	500	Piece
1801100001	110mm Bellmouthed	110	42	200	Piece
1801100002	110mm Non-bellmouthed	110	42	200	Piece

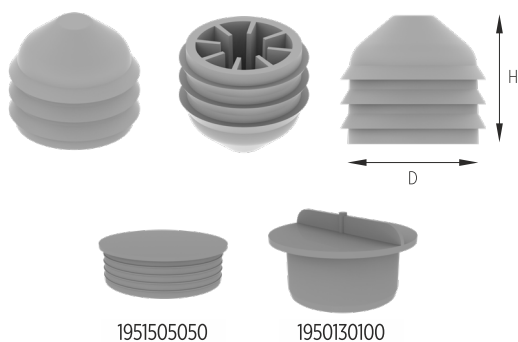
It is used for filling the Tie-rod gaps in the concrete.



**CONIC PLUGS**

CODE	REFERENCE	D Ø (mm)	H (mm)	PACKAGE	
				QTY	UNIT
1900221722	22mm	22	17	1.000	Piece
1900272527	27mm	27	25	500	Piece
1900302530	30mm	30	25	500	Piece
1900342534	34mm	34	25	500	Piece

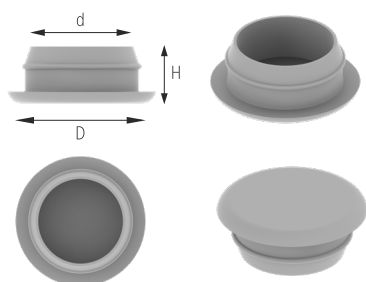
It is used to provide impermeability in Tie-rod gaps in the concrete.  
It is produced from soft PVC.



**SEALING PLUG FROM PVC**

CODE	REFERENCE	D Ø (mm)	H (mm)	PACKAGE	
				QTY	UNIT
1950090920	9/20mm	9	20	2.500	Piece
1950121224	12/24mm	12	24	1.500	Piece
1950252532	25/32mm	25	32	2.000	Piece
1950393940	39/40mm	39	40	1.000	Piece
1950484842	48/42mm	48	42	500	Piece
1950525242	52/42mm	52	42	500	Piece
1951505050	50/150mm	154	50	50	Piece
1950130100	100/130mm	100	55	50	Piece

It is used to cover the Tie-rod gaps of the Plywood and steel molds.



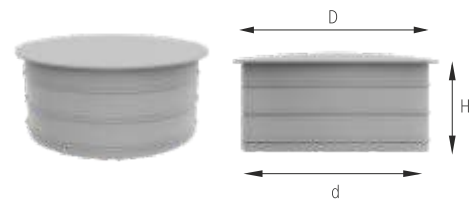
**PLYWOOD PLUGS**

CODE	REFERENCE	D Ø (mm)	H (mm)	d Ø (mm)	PACKAGE	
					QTY	UNIT
2051022018	18mm	22	10	18	1.000	Piece
2050826020	20mm	26	8	20	1.000	Piece



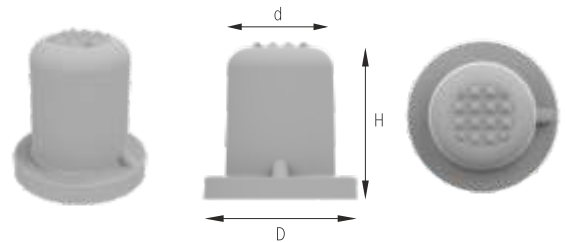
## CAPPED PLUGS

CODE	REFERENCE	D Ø (mm)	H (mm)	d Ø (mm)	PACKAGE	
					QTY	UNIT
2051534028	28mm	34	15	28	500	Piece
2051542035	35mm	42	15	35	500	Piece
2052769042	42mm	69	27	42	500	Piece
2053349049	49mm	49	33	49	500	Piece
2052058052	52mm	58	20	52	1.000	Piece
2051562056	56mm	62	15	56	250	Piece
2053378068	68mm	78	33	68	250	Piece



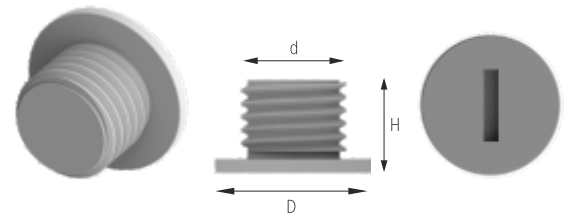
## IRON MESH END CAP

CODE	REFERENCE	D Ø (mm)	H (mm)	d Ø (mm)	PACKAGE	
					QTY	UNIT
2060000006	6mm	20	20	6	2.000	Piece
2060000008	8mm	20	20	8	2.000	Piece
2060000010	10mm	20	20	10	2.000	Piece



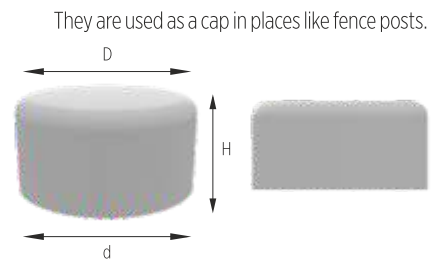
## METRIC PLUGS

CODE	REFERENCE	D Ø (mm)	H (mm)	d Ø (mm)	PACKAGE	
					QTY	UNIT
2070000012	M12	20	10	12	1.000	Piece
2070000020	M20	30	15	20	1.000	Piece



## OUTER CAPS

CODE	REFERENCE	D Ø (mm)	H (mm)	d Ø (mm)	PACKAGE	
					QTY	UNIT
2102346042	42mm	46	23	42	1.000	Piece
2103854048	48mm	54	38	48	500	Piece
2102765060	60mm	65	29	60	500	Piece
2103479076	76mm	79	34	76	500	Piece



They are used as a cog protection in coggled pipes, and as a welding end protection in welding ended pipes.



**COG PROTECTION CAPS**

CODE	REFERENCE	PRODUCT DESCRIPTION	PACKAGE	
			QTY	UNIT
7000190018	3/8"	d Ø : 3/8"	10.000	Piece
7000210020	1/2"	d Ø : 1/2"	5.000	Piece
7000260021	3/4"	d Ø : 3/4"	2.500	Piece
7000330021	1"	d Ø : 1"	2.000	Piece
7000420026	1 1/4"	d Ø : 1 1/4"	1.000	Piece
7000480025	1 1/2"	d Ø : 1 1/2"	1.000	Piece
7000600030	2"	d Ø : 2"	500	Piece
7000660022	2 1/4"	d Ø : 2 1/4"	250	Piece
7000730040	73mm	d Ø : 73mm	250	Piece
7000760034	2 1/2"	d Ø : 2 1/2"	250	Piece
7000820022	2 3/4"	d Ø : 2 3/4"	250	Piece
7000880038	3"	d Ø : 3"	200	Piece
7001020040	3 1/2"	d Ø : 3 1/2"	100	Piece
7001150042	4"	d Ø : 4"	80	Piece
7001400042	5"	d Ø : 5"	60	Piece
7001640042	6"	d Ø : 6"	50	Piece
7001700047	6 5/8"	d Ø : 6 5/8"	50	Piece
7001780045	7"	d Ø : 7"	40	Piece
7002190224	8"	d Ø : 8"	30	Piece
7002730278	10"	d Ø : 10"	25	Piece
7003230329	12"	d Ø : 12"	20	Piece

It is used to prevent work accidents placing them to Tie-rod ends or bar ledges in reinforced constructions. They are produced in luminous orange and yellow colors to attract attention.



TYPE 1



TYPE 2



TYPE 3

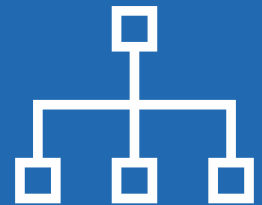
**SAFETY CAPS**

CODE	REFERENCE	IRON USED DIAMeter Ø (mm)	TYPE	PACKAGE	
				QTY	UNIT
7100010816	08-16	8-16	1	500	Piece
7100021832	18-32	18-32	1	250	Piece
7100031018	10-18	10-18	2	1.000	Piece
7100041832	18-32	18-32	2	500	Piece
7100053250	32-50	32-50	2	150	Piece
7100060816	08-16	8-16	3	1.000	Piece
7100071832	18-32	18-32	3	500	Piece





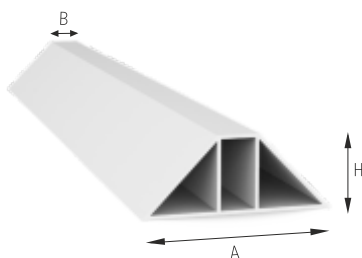
# PVC PROFILES



**True North**  
STRUCTURAL SYSTEMS



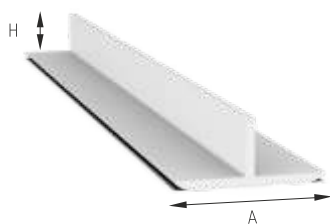
It is used in both vertical and horizontal reinforced concrete structures to hide the joint or to provide a gap as a pattern. It is made of rigid PVC and can be used repeatedly. It can be produced any length of demand.



## SPACING LATHS

CODE	REFERENCE	A (mm)	B (mm)	H (mm)	PACKAGE	
					QTY	UNIT
2400101020	20mm	20	10	10	150	Meter
2400171525	25mm	25	17	15	150	Meter
2400101030	30mm	30	10	10	150	Meter
2400201530	30mm	30	20	15	150	Meter
2400041533	33mm	33	4	15	150	Meter
2400202045	45mm	45	20	20	30	Meter
2400102050	50mm	50	10	20	30	Meter
2404100120	120mm	120	10	10	15	Meter

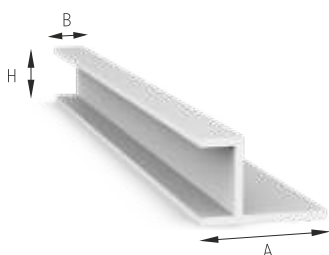
Generally used in pavements. It covers the gap between panels and prevents the concrete leakage. It also provides convenience in mold removal. It can be produced any length of demand.



## T-PROFILE

CODE	REFERENCE	A(mm)	H (mm)	PACKAGE	
				QTY	UNIT
2450001520	20mm	20	15	150	Meter
2450001535	35mm	35	15	150	Meter

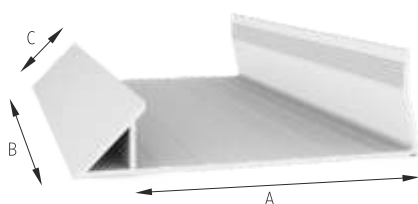
It is used in plywood assembling in reinforced concrete molds. It covers the gap in the joint area, thus preventing the concrete leakage. In the mold removal, the opposing gaps formed by the profiles make the removal easier. It can be produced any length of demand.



## PLYWOOD ASSEMBLY PROFILE

CODE	REFERENCE	A (mm)	B (mm)	H (mm)	PACKAGE	
					QTY	UNIT
2500101818	18mm	30	10	18	150	Meter
2500102020	20mm	30	10	20	150	Meter
2500102222	22mm	30	10	22	150	Meter
2500102424	24mm	30	10	24	150	Meter

It is used in steel molds when a chamfer is desired in the edges of the two panels. Also, it ensures the impermeability of the mold. It is made of rigid PVC and can be used repeatedly, with desired length.



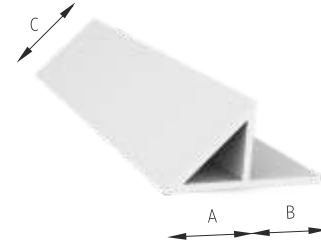
## VINCI PROFILE FOR STEEL FORMWORK

CODE	REFERENCE	A (mm)	B (mm)	C (mm)	PACKAGE	
					QTY	UNIT
2551004025	100mm	100	40	25	30	Meter
2551206025	120mm	120	60	25	30	Meter

## CHAMFER WITH FLANGE

CODE	REFERENCE	A (mm)	B (mm)	C (mm)	PACKAGE	
					QTY	UNIT
2600101515	15mm	10	15	15	150	Meter
1600151520	20mm	15	15	20	150	Meter
2600181525	25mm	18	15	25	150	Meter
2600201830	30mm	20	18	30	150	Meter
2600251835	35mm	25	18	35	150	Meter
2600281840	40mm	28	18	40	75	Meter
2600352050	50mm	35	20	50	75	Meter

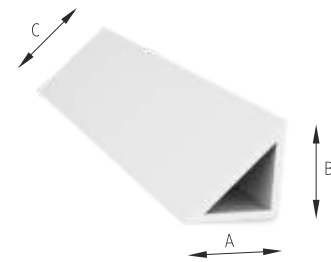
It is used when a chamfer is desired in the edges of the two panels. It is type with Flange.



## CHAMFER

CODE	REFERENCE	A (mm)	B (mm)	C (mm)	PACKAGE	
					QTY	UNIT
2610050507	7mm	5	5	7	150	Meter
2610101015	15mm	10	10	15	150	Meter
2610151520	20mm	15	15	20	150	Meter
2610181825	25mm	18	18	25	150	Meter
2610202030	30mm	20	20	30	150	Meter
2610252535	35mm	25	25	35	150	Meter
2610282840	40mm	28	28	40	150	Meter
2610353550	50mm	35	35	50	30	Meter

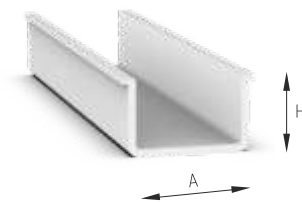
It is used when a chamfer is desired in the edges of the two panels. It is type without flange.



## U-PROFILE

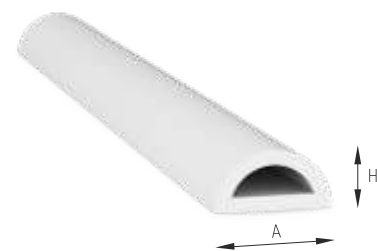
CODE	REFERENCE	A(mm)	H (mm)	PACKAGE	
				QTY	UNIT
2650001009	10/ 9mm	10	9	150	Meter
2650002415	24/15mm	24	15	150	Meter

These are plastic PVC profiles used in precast facade lining components to generate joint and drip.

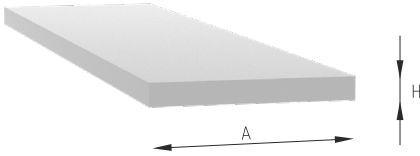


## ELLIPSE PROFILE

CODE	REFERENCE	A(mm)	H (mm)	PACKAGE	
				QTY	UNIT
2660002010	20/10mm	20	10	150	Meter



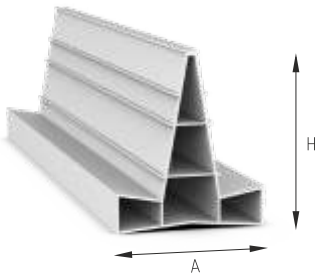
This is a component that prevents the deformation that can be formed due to the expansion and contraction in the field concrete. It also removes the concrete cutting or filling necessity. It is made of rigid PVC.



**MADE UP GROUND PROFILE**

CODE	REFERENCE	A(mm)	H (mm)	PACKAGE	
				QTY	UNIT
2700040035	35/4 mm	35	4	150	Meter

In industrial concrete floors, these are used for generating joints more conveniently and removes the cutting and filling necessity of them. Its usage is practical and economic due to its function as both mold and dilatation component. It is made of rigid PVC and has a standart length of 3 Meters



**CRACK INDUCER**

CODE	REFERENCE	A(mm)	H (mm)	PACKAGE	
				QTY	UNIT
2700350040	40 mm	34	40	30	Meter
2700600070	70 mm	60	70	30	Meter

It basically:

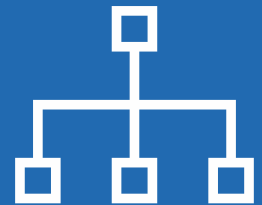
- Solves improperly cut joints and edge fracturing problems
- Removes the necessity for grouting material
- Prevents the formation of shrinkage cracks
- Removes the grade problems.

ALL OUR PVC PROFILES CAN BE PRODUCED ANY LENGHT AND ANY COLOR DEMANDED.

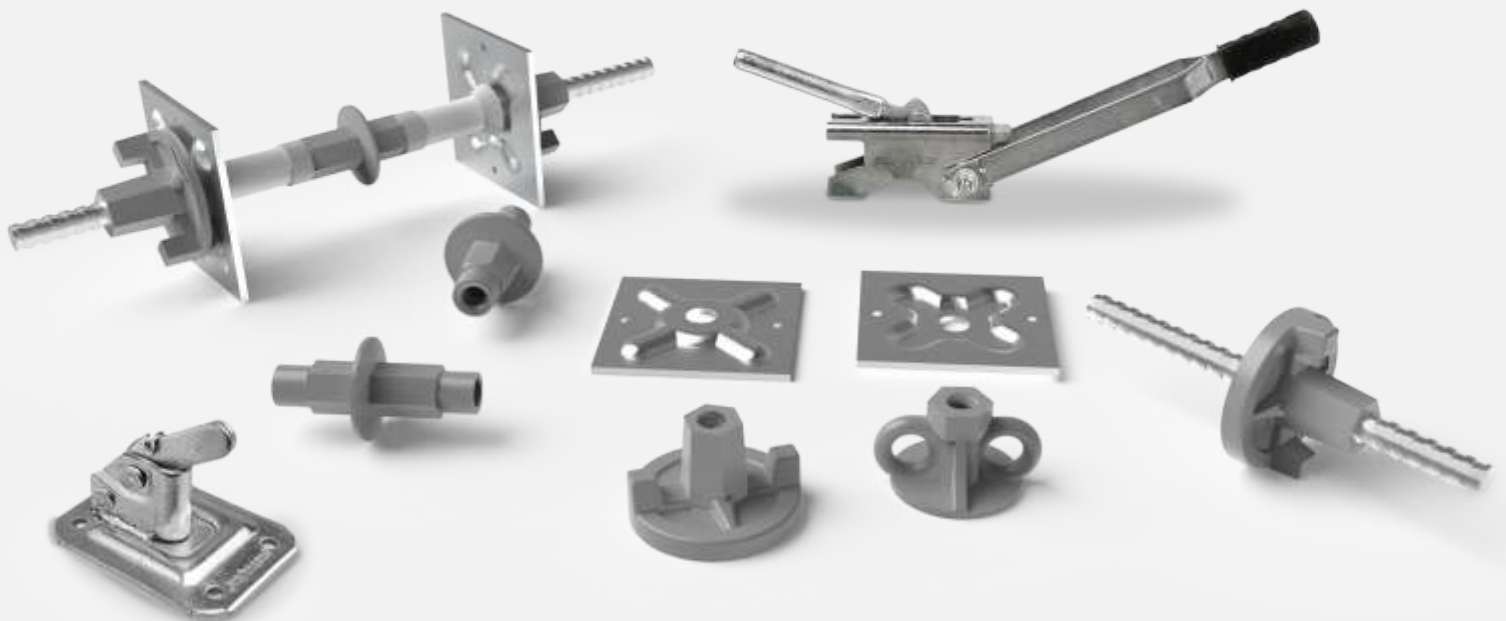




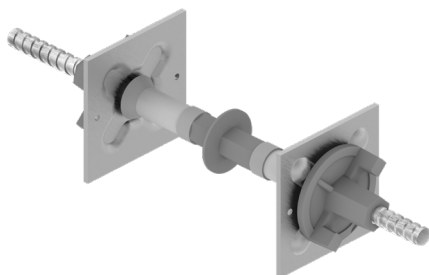
# METAL FORMWORK ACCESSORIES



**True North**  
STRUCTURAL SYSTEMS



While they are indispensable components primarily in establishing the required link between panels that are in the two sides of the beam molds and blade columns; they can be used in numerous implementations depending on the needs of the mold and the will of the implementer. Their maintenance is easy and their lifespan is long.



**TIE-ROD**

CODE	REFERENCE	Ø (mm)	L (mm)	PACKAGE	
				QTY	UNIT
2950420000	St 42	17	50-600	10	Piece

It is a plastic kit produced for Tie-rod assembling.



**TIE-ROD ASSEMBLY GUIDE**

CODE	REFERENCE	L (mm)	PACKAGE	
			QTY	UNIT
2960000001	Assembly Guide	820	100	Piece

Saves from time and labour by shortening the process time in the assembly of Tie-rod bars between the two molds.

Removes the necessity of using longer Tie-rod bars and saves from material.

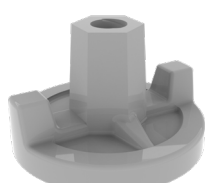
Prevents that longer Tie-rod bars that go over their normal mold template hit workers, thus preventing work accidents and providing work safety.

Allows cranes to move more comfortably while placing the moving molds.

It is made of nodular cast iron and its usage is simple and safe. It doesn't even necessitate a special key to be able to attach and remove it. An appropriately sized hammer or iron stick would do this job due to their special structure.



70 mm



90 mm

**ANCHOR NUT**

CODE	REFERENCE	Ø (mm)	PACKAGE	
			QTY	UNIT
3000170070	70mm	70	75	Piece
3000170090	90mm	90	50	Piece

It is made of steel sheet, distributes and enhances the anchor nut pressure. It also has special screw/nail holes to stabilize them to the mold.



**TIE ROD PLATE**

CODE	REFERENCE	DIMENSIONS (mm)	THICKNESS (mm)	PACKAGE	
				QTY	UNIT
3101212004	4 x120mm	120x120	4	50	Piece
3111212008	8 x120mm	120x120	8	25	Piece



## CLIPS

CODE	REFERENCE	PIN DIA Ø (mm)	MOLD THICKNESS (mm)	PACKAGE	
				QTY	UNIT
3150160505	16/5+5	16	5 + 5	50	Piece

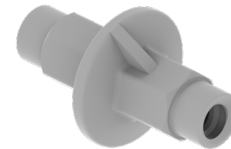
It is used in the assembly of the brattice panels and it is made of nodular cast iron.



## WATER STOPPER

CODE	REFERENCE	TIE-ROD DIA Ø (mm)	L (mm)	PACKAGE	
				QTY	UNIT
3200170111	Flanşlı Su Tutucu	17	111	50	Piece

In water structures, two special Tie-rods are assembled on its opposing ends, thus ensuring the reinforcement of the mold. It is made of nodular cast iron. The middle part is replete and its outer part is flanged.



## FORMWORK SPRING CLAMP

CODE	REFERENCE	IRON USED DIAMeter Ø	EBATLAR (mm)	PACKAGE	
				QTY	UNIT
3250810001	Galvanized - 4 mm	08-10	75-105	50	Piece

If an iron bar is used instead of a Tie-rod in reinforcements of the wall forms, posts and beam molds, this gets attached to opposite ends of the bar and prevents the dispersion of the mold. It holds the iron bar solidly due to its form.



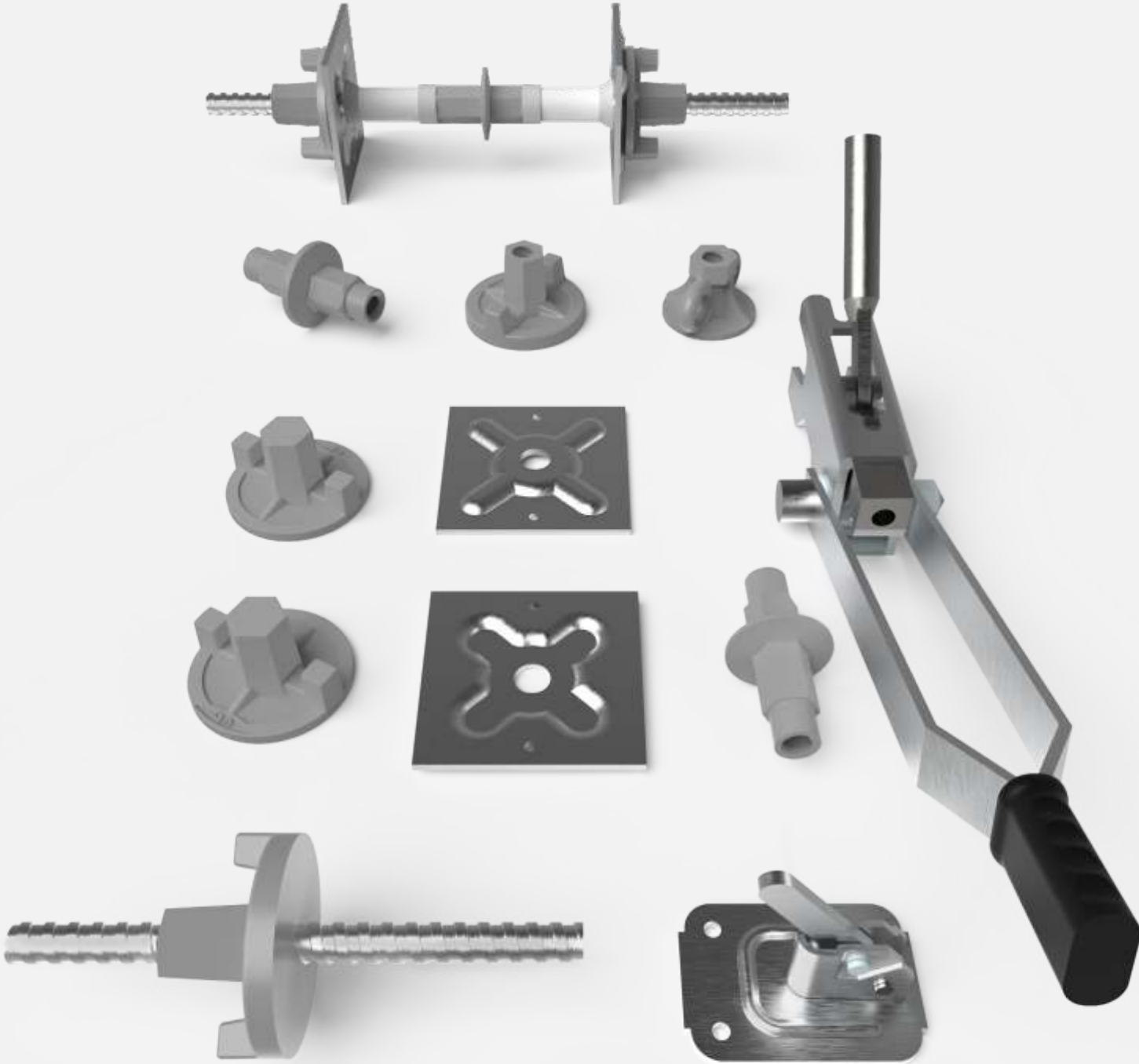
## SPRING CLAMP TENSIONER


CODE	REFERENCE	Ø (mm)	PACKAGE	
			QTY	UNIT
3280810001	Spring Clamp Tensioner	08-10	1	Piece

It is the component which tightens the formwork spring clamp.

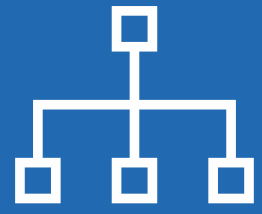


# METAL FORMWORK ACCESSORIES



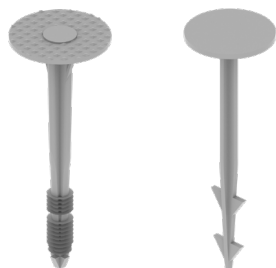


# INSULATION MATERIALS



**True North**  
STRUCTURAL SYSTEMS





**HERAPORE – FOAMBOARD NAIL**

CODE	REFERENCE	HEAD DIA Ø (mm)	L (mm)	PACKAGE	
				QTY	UNIT
4050340100	100mm	34	100	1.000	Piece
4050340090	90mm	34	90	1.000	Piece

If an insulation is needed below the prefabricated concrete components or paved concrete; the ledges of the nails that are sunk in materials like herapor, heraklit or styrafor before the concrete pouring stay in the concrete, stabilizing the concrete and the insulation material.



**FOAMBOARD ANCHORS WITH NAIL**

CODE	REFERENCE	HEAD DIA Ø (mm)	L (mm)	PACKAGE	
				QTY	UNIT
4100500075	75 mm	50	75	1000	Piece
4100600100	100mm	60	100	500	Piece
4100600120	120mm	60	120	500	Piece
4100600140	140mm	60	140	500	Piece
4100600160	160mm	60	160	500	Piece

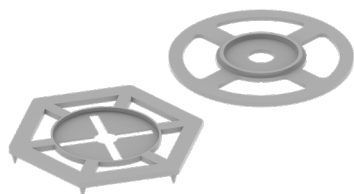
It is the ideal connection component used for assembling the inner and the outer insulation materials over the wall or the roof. It is stabilized with its own nail.



**EURO DOWEL WITH STEEL NAIL**

CODE	REFERENCE	HEAD DIA Ø (mm)	L (mm)	PACKAGE	
				QTY	UNIT
4110600095	95mm	60	95	500	Piece
4110600115	115mm	60	115	500	Piece
4110600135	135mm	60	135	500	Piece
4110600155	155mm	60	155	500	Piece

It is the ideal connection component used for assembling the inner and the outer insulation materials over the wall or the roof. It is stabilized with its own plastic headed metal nail.



**HERAPOR - STYRAFOR NAIL CAP**

CODE	REFERENCE	HEAD DIA Ø (mm)	PACKAGE	
			QTY	UNIT
4150000097	97mm	97	1.000	Piece
4150000090	90mm	90	1.000	Piece

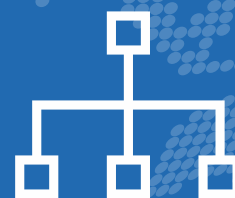
It provides a wider surface in the assemblage of the insulation materials like stone wool. Used by installing in the dowel.



**SIDING DOWEL**

CODE	REFERENCE	DIA Ø (mm)	L (mm)	PACKAGE	
				QTY	UNIT
4160080100	8 x 100	8	100	1000	Piece

# SHIMPADS



**True North**  
STRUCTURAL SYSTEMS

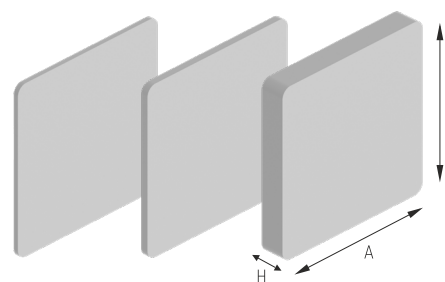
## U- SHIMPADS

CODE	REFERENCE	A (mm)	B (mm)	H (mm)	PACKAGE	
					QTY	UNIT
5500747402	2mm	74	74	2	1.000	Piece
5500747403	3mm	74	74	3	1.000	Piece
5500747405	5mm	74	74	5	600	Piece
5500747410	10mm	74	74	10	300	Piece
5500747420	20mm	74	74	20	150	Piece



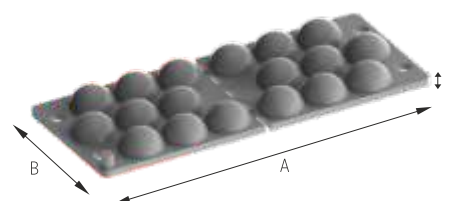
## SHIMPADS

CODE	REFERENCE	A (mm)	B (mm)	H (mm)	PACKAGE	
					QTY	UNIT
5520353502	2mm	35	35	2	1.000	Piece
5520707002	2mm	70	70	2	1.000	Piece
5520707003	3mm	70	70	3	600	Piece
5520707005	5mm	70	70	5	300	Piece
5520707010	10mm	70	70	10	300	Piece
5520707020	20mm	70	70	20	180	Piece

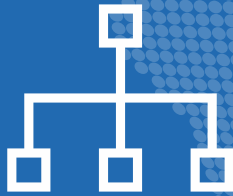


## STAPELPAS

CODE	REFERENCE	A (mm)	B (mm)	H (mm)	PACKAGE	
					QTY	UNIT
6601506011	11mm	150	60	11	200	Piece



# FORMWORK OIL



**True North**  
STRUCTURAL SYSTEMS

It is produced for steel, plywood and wooden molds and applied upon molds with brush, roll or injection method. It ensures that the mold is separated with ease from the concrete and a clean and smooth surface is acquired. Avoid longtime and continuous contact with used oil for your health and do not pollute sewers, waterways and nature. Throw empty containers to wasteyards.

## FORMWORK OIL

CODE	REFERENCE	PRODUCT DESCRIPTION	PACKAGE	
			QTY	UNIT
3552100001	Barrel	180 kg - 210 lt	1	Piece
3560300001	Drum	25 kg - 30 lt	1	Piece

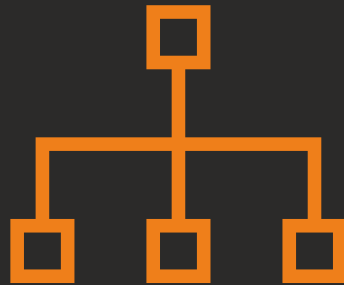


It is used in Plywood molds to prevent the leakage of water and moisture to the cut side surfaces. It is a special one-component dye that has a high pigment coverage and high alkali resistance and it is resistant against UV rays.

## PLYWOOD SIDE DYE

CODE	REFERENCE	PRODUCT DESCRIPTION	PACKAGE	
			QTY	UNIT
3580010001	Side Dye	2,5 kg - 3.0 lt	1	Piece





# True North

STRUCTURAL SYSTEMS



**Canada Head Office**

210 8399 200th St. Langley B.C.  
V2Y 3C2Canada

**Canada Ottawa Office**

201-2487 Kaladar Ave. Ottawa  
ON. K1V 8B9

**USA Texas Office**

226 S.Enterpize Pkwy. Corpus Christi  
78405 Texas USA

[www.truenorthstructural.com](http://www.truenorthstructural.com)





